

the
sanitaryware
company

Doc M Solutions



The Sanitaryware Company has been born out of 40-years market-leading washroom knowledge and expertise. In terms of compliance, durability and design we are confident our products will meet and exceed your requirements. As well as working with a finite selection of reputable business partners we also bring to you our in-house brand SanCeram.

SanCeram has been developed utilising our extensive knowledge and understanding of the washroom industry. We have sought and handpicked manufacturers who share the SanCeram ethos of offering our customers high quality sanitaryware to suit all sectors and budgets. Our range has been extended so we can now bring you the quality, design and value of our SanCeram range to your universal access washroom through our Doc M solutions.



Why Choose SanCeram?

Cost Effective

Cost saving of up to 40%

25 Year Warranty

Our ceramics come with a 25 year warranty

Approved and Certified

SanCeram contains HBN, DDA, WRAS approved and LABC certified products

Contemporary Styling

Inspired, modern designs without compromising on quality

Specification Support

We are on hand to offer support through our free of charge NBS writing service

Technical Support

Dedicated technical team to offer support and advice throughout the project, even after installation

Delivery When You Need It

Regional distribution hubs allow for delivery within 48 hours or collection within 24 hours*

SanCeram
Contemporary commercial washrooms

**subject to confirmation at point of order.*

What is a Doc M Pack

Document M (Doc M) of the building regulations provides guidance on providing access to and the use of buildings for disabled people. It helps ensure that washroom facilities are available for all regardless of the nature of the building.

In conjunction with the Equality Act (updated 2010) which requires that every business providing goods or services to the public must take reasonable steps to ensure disabled people are not at a disadvantage compared to non-disabled people when accessing all aspects of their premises, in short it gives 'access for all'.

You will also find requirements for visual impaired users which state that a 30 point LRV difference should be allowed for between the critical surfaces, in the washroom environment, typically between the walls, floor, grab rails and sanitaryware fittings.

BS 8300-2 2018 must also be considered and gives guidance on the size, layout and fittings required in washroom facilities provided for disabled users.



Key features of a Doc M Pack

The primary characteristics of a modern washroom suitable for disabled use are shown in the example to the left. Fit for purpose is essential and sanitaryware items must be easy to operate, tailored to a specific need and correctly positioned.

1. **Grab rails available in a range of styles and colours**
2. **Hinged support arm suitable for loads up to 120kg**
3. **Spatula style lever flush for ease of use**
4. **Dual flush cistern supplied with 4.5ltr effective flush volume**
5. **Solid stainless steel seat fixing bar for extra security**
6. **WC seats available in a range of colours**
7. **Sequential basin mixer for ease of use - TMV3 approved controlled tap to prevent scolding**
8. **Tap position to be closest to the WC**
9. **Basin without overflow to prevent bacteria build up**
10. **Basin supplied with strainer waste to allow washing under running water**
11. **WC pan designed with required extended projection and raised height to meet regulations without the need for spacer boxes**
12. **Rimless flush design to WC pans for the ultimate in hygiene**
13. **WC available as close coupled, back to wall or wall hung**

SanCeram Doc M Solutions

We can now bring you the quality, design and value of our SanCeram range to your universal access washroom. We have a diverse range of Doc M packs from the Essentials range right through to our Sensor packs to ensure that all your requirements are met.

- ◇ Arrives boxed with everything included to be Doc M compliant ✓
- ◇ 48-hour nationwide delivery ✓
- ◇ WRAS approved and tested components ✓
- ◇ TMV3 approved components ✓
- ◇ LABC approved ✓
- ◇ 25-year warranty on WCs and basin ceramics ✓
- ◇ Available in left and right handed ✓
- ◇ Various colours and styles available ✓
- ◇ Truly rimless, hygienic WC pan ✓



Our taps are supplied TMV3 approved to ensure the correct water temperature and prevent scalding.



Grab Rails are available in a selection of colours to ensure that the DDA guidance of a 30 point LRV value difference between surfaces can be adhered to.



Sensor flushes meet the strictest hygiene requirements and when used alongside our sensor taps offer users complete peace of mind for touch free control.



All our WC's offer a rimless flush design to ensure ultimate hygiene, with the added bonus of saving water by only using the required amount for each flush.



Please note: The handing of a Doc M pack is determined by the basin position when looking as if stood facing the WC.





SCDMERB: Essentials Rimless Doc M Pack - Blue

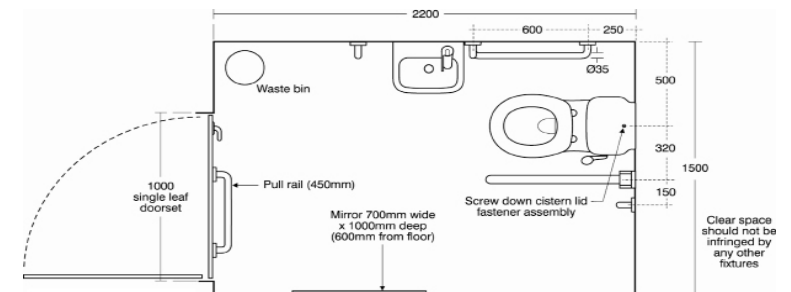
Our SanCeram Essentials Rimless Doc M range is ideal for when you need the essential items and nothing more. Arriving boxed, you can rest assured that compliance and durability will all be matched for your wheelchair accessible washroom.

Features

- Close coupled WC Doc M compliant universal pack
- Steel powder-coated grab rails available in Blue, White or Dark Grey
- Rimless WC for increased hygiene
- Toilet seat with adjustable buffers
- Two tap hole basin for flexibility of handing

Pack contains:

- Close Coupled Rimless WC Pan and Cistern Assembly
- Spatula Cistern Lever
- Seat*
- Grab Rail Set*
- Two Tap Hole Basin and Fittings
- Tap Hole Cover
- Waste
- Plastic Bottle Trap
- Sequential Basin Mixer Tap
- TMV3 Valve - to complete the Doc M set up available separately



| Order code | Description |
|------------|--|
| SCDMERW | SanCeram Essentials Rimless Doc M pack - White |
| SCDMERB | SanCeram Essentials Rimless Doc M pack - Blue |
| SCDMERG | SanCeram Essentials Rimless Doc M pack - Dark Grey |

**Colour / style dependant on your pack choice.*



SCDMCCRG: SanCeram Close Coupled WC Doc M Pack, Right Handed - Dark Grey

| Order code | Description |
|------------|--|
| SCDMCCLW | SanCeram Close Coupled WC Doc M pack, left handed - White |
| SCDMCCRW | SanCeram Close Coupled WC Doc M pack, right handed - White |
| SCDMCCLB | SanCeram Close Coupled WC Doc M pack, left handed - Blue |
| SCDMCCRB | SanCeram Close Coupled WC Doc M pack, right handed - Blue |
| SCDMCCLG | SanCeram Close Coupled WC Doc M pack, left handed - Dark Grey |
| SCDMCCRG | SanCeram Close Coupled WC Doc M pack, right handed - Dark Grey |
| SCDMCCLSS | SanCeram Close Coupled WC Doc M pack, left handed - Stainless Steel |
| SCDMCCRSS | SanCeram Close Coupled WC Doc M pack, right handed - Stainless Steel |

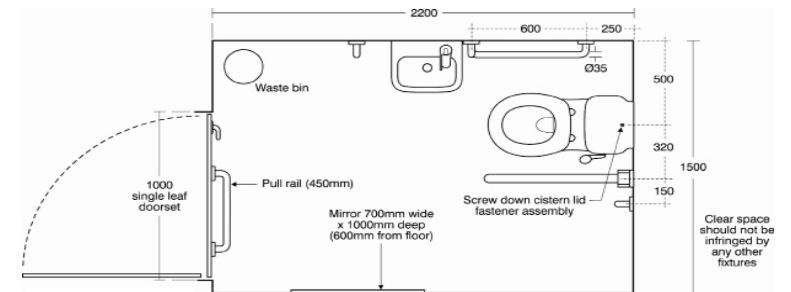
Our SanCeram Close Coupled WC Doc M range is perfect for commercial accessible washrooms. Including everything you need to ensure it is fit for purpose, with the added bonus of tailoring colours to your decor to ensure that LRV requirements are met.

Features

- Close Coupled WC Doc M compliant pack available in left and right handing
- Grab rails available in Powder Coated Steel, White, Blue and Dark Grey
- Co-ordinating Toilet Seat offered in White, Blue and Dark Grey
- Rimless WC ideal for water saving and increased hygiene

Pack contains:

- Close Coupled 750 Projection WC Pan
- Close Coupled Cistern and Internals
- Seat*
- Grab Rail Set*
- Wall Hung 380 Single Tap Hole Basin*
- TMV3 Sequential Tap
- Waste



**Colour / style dependant on your pack choice. A White seat is supplied with Stainless Steel pack.*



SCDMBTWLW - SanCeram Back To Wall WC Doc M Pack, Left Handed - White

Our SanCeram Back To Wall WC Doc M range offers a modern twist on the traditional accessible washroom. With multiple colour options for the grab rails, back rest and seat your washroom can be truly customised whilst still being compliant.

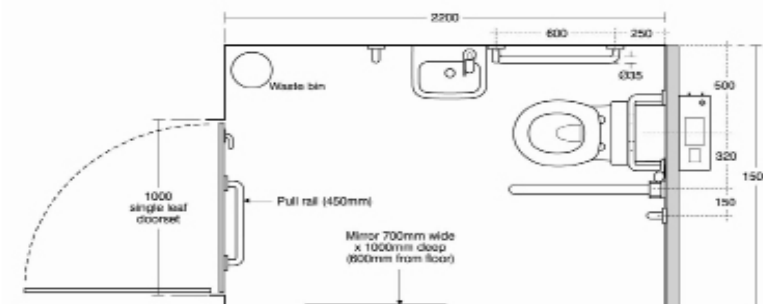
Features

- Back to Wall WC Doc M compliant pack available in left and right handing
- Grab rails available in Chrome, Stainless Steel, Matt Black, White, Blue and Dark Grey
- Co-ordinating Back Rest to the grab rails, offered in Metal, White, Blue, Dark Grey and Matt Black
- Rimless WC ideal for water saving and increased hygiene

Pack contains:

- 750 Projection Back To Wall WC Pan
- Dimple Lever Concealed Cistern
- Seat*
- WC Back Rest*
- Grab Rail Set*
- Wall Hung 380 Basin*
- TMV3 Sequential Tap
- Waste
- Plastic bottle trap

| Order code | Description |
|------------|--|
| SCDMBTWLW | SanCeram Back To Wall WC Doc M pack left handed - White |
| SCDMBTWRW | SanCeram Back To Wall WC Doc M pack right handed - White |
| SCDMBTWLB | SanCeram Back To Wall WC Doc M pack left handed - Blue |
| SCDMBTWRB | SanCeram Back To Wall WC Doc M pack right handed - Blue |
| SCDMBTWLG | SanCeram Back To Wall WC Doc M pack left handed - Dark Grey |
| SCDMBTWRG | SanCeram back To Wall WC Doc M pack right handed - Dark Grey |
| SCDMBTWLSS | SanCeram Back To Wall WC Doc M pack left handed - Stainless Steel |
| SCDMBTWRSS | SanCeram Back To Wall WC Doc M pack right handed - Stainless Steel |
| SCDMBTWLC | SanCeram Back To Wall WC Doc M pack left handed - Chrome |
| SCDMBTWRC | SanCeram back to wall WC Doc M pack right handed - Chrome |
| SCDMBTWLMB | SanCeram Back To Wall WC Doc M pack left handed - Matt Black |
| SCDMBTWRMB | SanCeram back to wall WC Doc M pack right handed - Matt Black |



**Colour / style dependant on your pack choice. A White seat is supplied with Stainless Steel and Chrome pack.*



SCDMWHRC : SanCeram Wall Hung WC Doc M Pack, Right Handed - Chrome

| Order code | Description |
|------------|---|
| SCDMWHLSS | SanCeram wall hung WC Doc M pack left handed - Stainless Steel |
| SCDMWHRSS | SanCeram wall hung WC Doc M pack right handed - Stainless Steel |
| SCDMWHLC | SanCeram wall hung WC Doc M pack left handed - Chrome |
| SCDMWHRC | SanCeram wall hung WC Doc M pack right handed - Chrome |
| SCDMWHLMB | SanCeram wall hung WC Doc M pack left handed - Matt Black |
| SCDMWHRMB | SanCeram wall hung WC Doc M pack right handed - Matt Black |

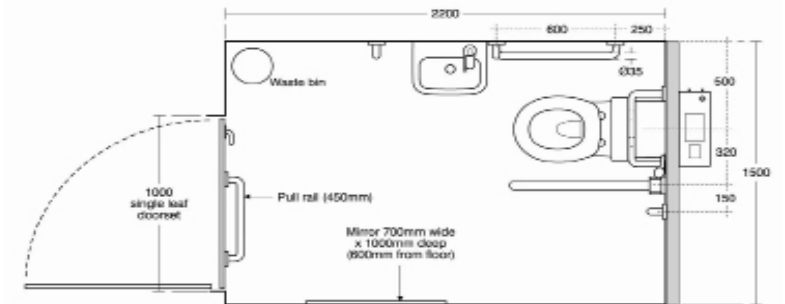
Our SanCeram Wall Hung WC Doc M range offers you a choice of Stainless Steel, Chrome and Matt Black grab rails. Alongside a co-ordinating back rest you will have a modern accessible washroom that ticks all the boxes for both accessibility and aesthetics.

Features

- Wall Hung WC Doc M compliant pack available in left and right handing
- Grab rails available in Chrome, Stainless Steel and Matt Black
- Co-ordinating Back Rest offered in Chrome or Matt Black
- Aesthetically pleasing Metal Bottle Trap
- Rimless WC ideal for water saving and increased hygiene

Pack contains:

- 750 Projection Wall Hung WC Pan
- Wall Hung WC Brackets - Pair
- Oyster Dual Flush Push Plate & Concealed Cistern
- Seat in White
- WC Back Rest in Chrome or Matt Black
- Grab Rail Set*
- Wall Hung 380 Basin*
- TMV3 Sequential Tap
- Waste
- Metal Bottle Trap



*Colour / style dependant on your pack choice.



SCDMWHL5MB: SanCeram Sensor Wall Hung WC Doc M Pack, Left Handed - Matt Black

Our SanCeram Sensor Doc M range is ideal for the more luxurious accessible washroom. With sensor taps and sensor flushes, as well as multiple choices for the WC and grab rails, there are plenty of options for this distinctive Doc M solution.

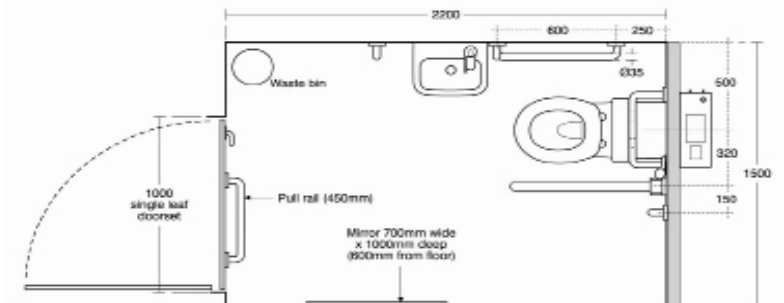
Features

- Sensor Doc M compliant pack available in left and right handing
- Sensor Tap and Sensor Flush offer ultimate hygiene control
- Grab rails available in Chrome, Stainless Steel and Matt Black
- Co-ordinating Back Rest offered in Chrome or Matt Black
- Back To Wall and Wall Hung WC options
- Sensor taps reduce water consumption

Pack contains:

- Wall Hung or Back To Wall WC Pan*
- Sensor Flush with Concealed Cistern
- Seat in White
- WC Back Rest in Chrome or Matt Black
- Grab Rail Set*
- Wall Hung 380 Basin*
- SanCeram Sensor Tap
- 15mm TMV3 Valve
- Waste
- Metal Bottle Trap

| Order code | Description |
|-------------|--|
| SCDMBTWL5SS | SanCeram Sensor back to wall WC Doc M pack, left handed - Stainless Steel |
| SCDMBTWR5SS | SanCeram Sensor back to wall WC Doc M pack, right handed - Stainless Steel |
| SCDMBTWL5C | SanCeram Sensor back to wall WC Doc M pack, left handed - Chrome |
| SCDMBTWR5C | SanCeram Sensor back to wall WC Doc M pack, right handed - Chrome |
| SCDMBTWL5MB | SanCeram Sensor back to wall WC Doc M pack, left handed - Matt Black |
| SCDMBTWR5MB | SanCeram Sensor back to wall WC Doc M pack, right handed - Matt Black |
| SCDMWHL5SS | SanCeram Sensor wall hung WC Doc M pack, left handed - Stainless Steel |
| SCDMWHR5SS | SanCeram Sensor wall hung WC Doc M pack, right handed - Stainless Steel |
| SCDMWHL5C | SanCeram Sensor wall hung WC Doc M pack, left handed - Chrome |
| SCDMWHR5C | SanCeram Sensor wall hung WC Doc M pack, right handed - Chrome |
| SCDMWHL5MB | SanCeram Sensor wall hung WC Doc M pack, left handed - Matt Black |
| SCDMWHR5MB | SanCeram Sensor wall hung WC Doc M pack, right handed - Matt Black |



*Colour / style dependant on your pack choice.



Our SanCeram Shower Doc M Pack offers the complete Shower Doc M solution, ideal for public shower areas including Leisure environments and places of work.

Features

- Doc M compliant (concealed valve version)
- Concealed or exposed shower valve options
- TMV3 shower valve to help prevent scolding
- Available with White, Blue, Grey, Stainless Steel, Chrome and Matt Black rails

Pack contains:

- Grab Rails* (1 x 450, 2 x 600 & 2 x drop down)
- TMV3 shower valve
- Shower head on hose & rail
- Fixed shower head
- Lever operated diverter valve
- 1200 x 1200 shower curtain & rail
- Folding seat & back rest (650mm min projection)
- Clothes hook

| Order code | Description |
|------------|--|
| SWCDMSHCW | SanCeram Doc M Concealed Shower Pack - White |
| SWCDMSHCB | SanCeram Doc M Concealed Shower Pack - Blue |
| SWCDMSHCG | SanCeram Doc M Concealed Shower Pack - Dark Grey |
| SWCDMSHCSS | SanCeram Doc M Concealed Shower Pack - Stainless Steel |
| SWCDMSHCC | SanCeram Doc M Concealed Shower Pack - Chrome |
| SWCDMSHCMB | SanCeram Doc M Concealed Shower Pack - Matt Black |
| SCDMSHEWH | SanCeram Doc M Exposed Shower Pack - White |
| SCDMSHEBL | SanCeram Doc M Exposed Shower Pack - Blue |
| SCDMSHEGR | SanCeram Doc M Exposed Shower Pack - Grey |
| SWCDMSHES | SanCeram Doc M Exposed Shower Pack - Stainless Steel |
| SWCDMSHEC | SanCeram Doc M Exposed Shower Pack - Chrome |
| SWCDMSHEMB | SanCeram Doc M Exposed Shower Pack - Matt Black |

**Colour / style dependant on your pack choice.*

Hand Dryers



Turboforce Junior PLUS hand dryer

No touch hand dryer, ideal for areas that require increased hygiene.

Stock code: PL94MBS



Slimline warm hand dryer

No touch, automatic slimline warm air dryer. Perfect to improve user hygiene.

Stock code: 0302005

Toilet Roll Holders



Lockable multi-flat toilet tissue dispenser

Minimalist, modern design - suitable for multi-flat or flat pack toilet tissue.

Stock code: 0302517



Plastic lockable toilet tissue dispenser

Plastic lockable multiflat toilet tissue dispenser with blue translucent viewing window.

Stock code: 0302539

Paper Towel Dispensers



Stainless Steel lockable paper towel dispenser

Wall-mounted, brushed Stainless Steel paper towel dispenser, with visual display window.

Stock code: 0302526



Plastic lockable paper towel dispenser

Plastic lockable paper towel dispenser with blue translucent capacity viewing window.

Stock code: 0302537

Coat Hooks



Stainless Steel cost hook

Contemporary, robust Stainless Steel, 65mm cost hook with concealed fixings.

Stock code: CH65SWC



Plastic coat hook

Plastic coat hook, in dark grey. Includes fixings for a variety of wall / panel types.

Stock code: 0300137

Soap Dispensers



Lockable push action soap dispenser

Lockable push action soap dispenser with clear viewing window in ABS and Stainless Steel.

Stock code: 0302513



Plastic push action liquid soap dispenser

Plastic push action liquid soap dispenser with blue translucent viewing window.

Stock code: 0302540

Door Signs



Wheelchair Accessible WC pictogram door sign

Stainless Steel, wheelchair accessible WC door sign. Self adhesive fixing.

Stock code: 0302566



Unisex WC pictogram door sign

Stainless Steel, unisex WC door sign. Self adhesive fixing.

Stock code: 0302565

Waste Bins



Touch free liquid soap dispenser / sanitiser

With the infrared sensor, soap or sanitiser is dispensed automatically for improved hygiene.

Stock code: AUTO20AAD



Stainless Steel 30ltr waste bin

Stainless Steel 30ltr floor standing waste bin without lid.

Stock code: 0302528

Colostomy Bag Shelves



Premium anti-bacterial colostomy bag shelf

300mm anti-bacterial colostomy bag shelf manufactured from robust duroplast.

Stock code: 260803WH



White anti-bacterial colostomy bag shelf

595mm anti-bacterial colostomy bag shelf manufactured from robust duroplast.

Stock code: 140201WH

Individual Items

WCs

| Order code | Description |
|------------|---|
| CHWC106 | Chartham back to wall 750mm projection WC pan |
| CHWC107 | Chartham close coupled 750mm projection WC pan with cistern |

WC Seats

| Order code | Description |
|------------|-----------------------|
| CHWC112 | Seat only - White |
| CHWC113 | Seat only - Blue |
| CHWC114 | Seat only - Dark Blue |

Cisterns

| Order code | Description |
|------------|--|
| CIST102 | Dimple lever concealed cistern |
| CIST107 | Oyster flush plate and concealed cistern |
| CIST219 | Drift flush plate - Chrome |
| CIST2000 | OSMO T1 concealed cistern |
| CIST215 | Electroflo sensor flush and control box |
| CIST216B | Sensor surround - Matt Black |

Wash Basins

| Order code | Description |
|------------|---|
| CHWB101 | Wall hung 380 left hand tap hole basin |
| CHWB102 | Wall hung 380 right hand tap hole basin |

Taps

| Order code | Description |
|------------|---|
| SCBW119 | SanCeram sensor tap |
| SCBW120 | TMV3 sequential tap |
| 327966 | Electroflo contemporary sensor tap - Matt Black |

TMV3 Valves

| Order code | Description |
|------------|-----------------|
| SCBW113 | 15mm TMV3 valve |

Traps and Wastes

| Order code | Description |
|------------|---------------------------------------|
| A10R | Plastic bottle trap |
| TSWC114 | Modern metal bottle trap |
| VSN625BK | Modern metal bottle trap - Matt Black |

Back Rests

| Order code | Description |
|------------|---------------------------|
| DM0167CR | WC back rest - Chrome |
| GRBR101 | WC back rest - White |
| GRBR102 | WC back rest - Blue |
| GRBR103 | WC back rest - Dark Grey |
| GRBR201MB | WC back rest - Matt Black |

Grab Rails

Powder Coated Steel Grab Rails - Exposed fixing for dry environments

| 450mm Powder Coated Grab Rail: | | |
|---------------------------------------|----------------|---------------------|
| White - GRAB101 | Blue - GRAB104 | Dark Grey - GRAB110 |
| 600mm Powder Coated Grab Rail: | | |
| White - GRAB102 | Blue - GRAB105 | Dark Grey - GRAB111 |
| 800mm Hinged Powder Coated Grab Rail: | | |
| White - GRAB103 | Blue - GRAB106 | Dark Grey - GRAB112 |

Stainless Steel Grab Rails - Concealed fixing for wet environments

| Stainless Steel Grab Rail: | | |
|----------------------------|-----------------|------------------|
| 450mm - GRAB113 | 600mm - GRAB114 | Hinged - GRAB115 |

Powder Coated Stainless Steel Grab Rails - Concealed fixing for wet environments

| 455mm Stainless Steel Powder Coated Concealed Fixing Grab Rail: | | | |
|--|----------------|----------------------|---------------------|
| White - GRAB201 | Blue - GRAB204 | Light Grey - GRAB207 | Dark Grey - GRAB210 |
| 600mm Stainless Steel Powder Coated Concealed Fixing Grab Rail: | | | |
| White - GRAB202 | Blue - GRAB205 | Light Grey - GRAB208 | Dark Grey - GRAB211 |
| Hinged Stainless Steel Powder Coated Concealed Fixing Grab Rail: | | | |
| White - GRAB203 | Blue - GRAB206 | Light Grey - GRAB209 | Dark Grey - GRAB212 |

Contemporary Stainless Steel Coated Grab Rails - Concealed fixing for wet environments

| Contemporary Chrome Grab Rail: | | |
|------------------------------------|------------------|-------------------|
| 480mm - GRAB122 | 620mm - GRAB123 | Hinged - GRAB124 |
| Contemporary Matt Black Grab Rail: | | |
| 480mm - GRAB122B | 620mm - GRAB123B | Hinged - GRAB124B |


| Grab Rail colour: | RAL colour reference: | LRV value: |
|-------------------|-----------------------|------------|
| White | RAL 9016 | LRV 87 |
| Blue | RAL 5011 | LRV 6 |
| Dark Grey | RAL 7016 | LRV 8 |
| Matt Black | RAL 9005 | LRV 4.1 |



Exposed Grab Rails: Our Steel grab rails are suited to dry environments and have exposed fixings.



Concealed Grab Rails: Our Stainless Steel grab rails are suitable for use in wet environments and designed with concealed fixings.



Our range of Doc M solutions can be purchased online, or if you have a larger project and require a bespoke specification you can liaise directly with our internal team.

Tel: 01474 338300
sales@theswc.co.uk
www.theswc.co.uk

the
sanitaryware
company